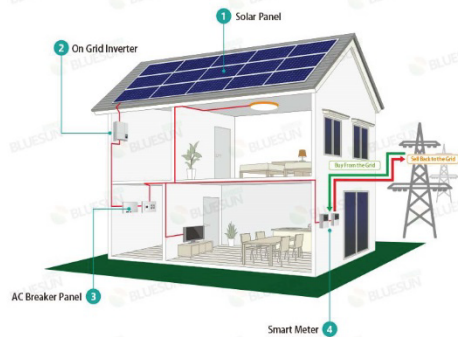
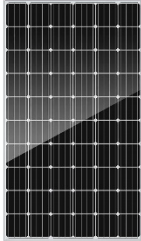



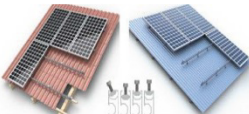


Quotaion for 2KW on grid solar system



Item	Model	Picture	Description	Quantity	Price
1	BSM280M-60		Weight:19KG Size:1640*990*40mm	8Pcs	
2	600w Micro inverter		Output voltage: AC 208V Weight: 4.0 kg Size:277x132x50 mm	4pcs	
3	Component		5 meters (16 feet) 12 AWG AC cable w/ female connector end cap for female connector	1pc	
4	Monitoring system		Communication Gateway w/ power cord	1pc	
5	Mounting Structure		(Customized)	2000W	

